



Sulphur mills limited
Technology leaders in advanced formulations



India

البياسين الزراعية
ALYASEEN AGRICULTURE

COSAVET

%80 WG

**Comprehensive prevention
Treatment of fungal and arachnoid diseases**



Active ingredient :-

Micronized Sulphur 80% WDG

Description :-

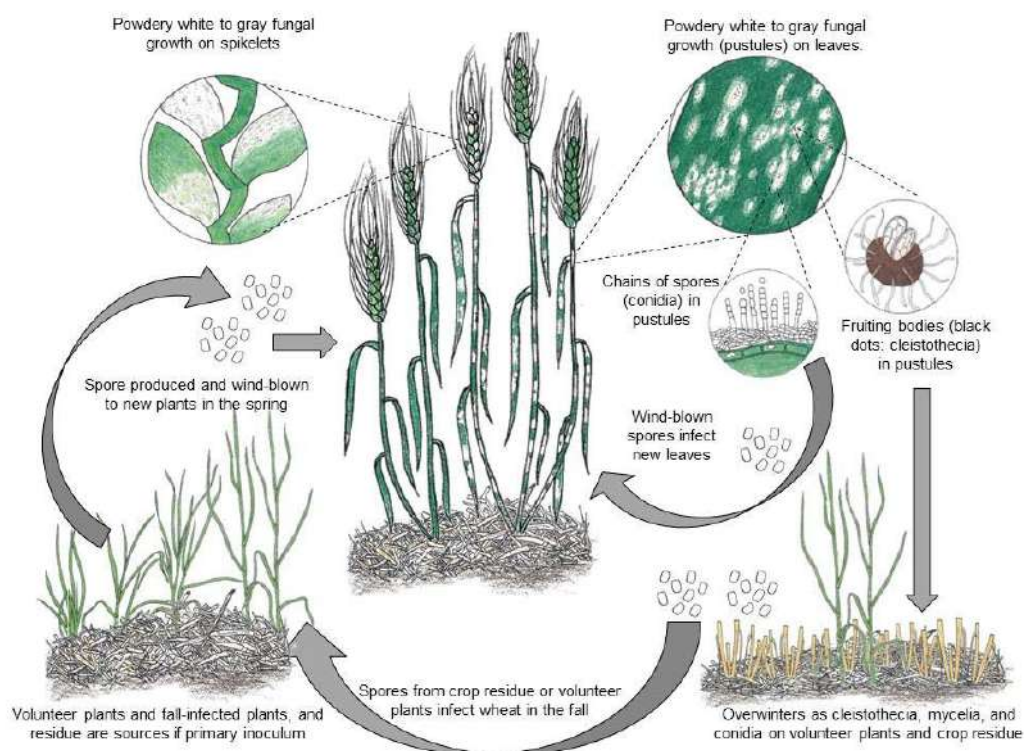
Cosavet consists of 80% Micron sulfur in the form of water-soluble granules and is used in the Prevention of many fungal diseases and plant treatment of powdery mildew, as it has a strong effect against spider mites .



Cosavet working mechanism :-

- Sulfur crystals collect sunlight, eliminating the fungus .
- Sulfur interferes with the cytochrome B system, a respiratory enzyme involved in the oxidation of food compounds, and is especially toxic to humans .
- Sulfur combines, forming hydrogen sulfide gas with an inhibitory effect on mushroom cells .

Powdery Mildew Disease Cycle



Why Cosavet :-

- 1) Prevention of many fungus diseases and treatment of the plant from powdery mildew, which is characterized by the fact that its spores germinate in the absence of a thin layer of water at the point of entry through the smooth zone (an area in the tissue that becomes soft before the germ runs out ... The fungus absorbs sulfur in its vaporous state).
- 2) It strongly affects the Spider, especially the entire insect and nymph phases .
- 3) Sulfur is a necessary nutrient in the formation of proteins and the process of respiration .
- 4) WG composition quickly soluble in water .
- 5) It is recommended in organic farming and integrated control programs .

Infection photos



Alfalfa Powdery mildew



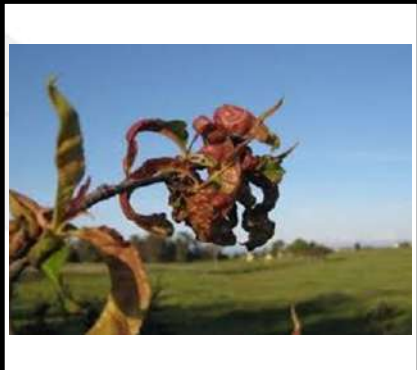
Scabies in apples



Rust Diseases



Leaf curl in prunes



Grape Powdery mildew



Leaf curl in pepper



Infection photos



Roses Powdery mildew



Squash Powdery mildew



Pumpkins Powdery mildew



Citrus spider mites



Tomato Powdery mildew



Date palms spider mites



Tomato spider mites

Sulphur deficiency in different crops



Potato



Onion



Strawberry



Olive



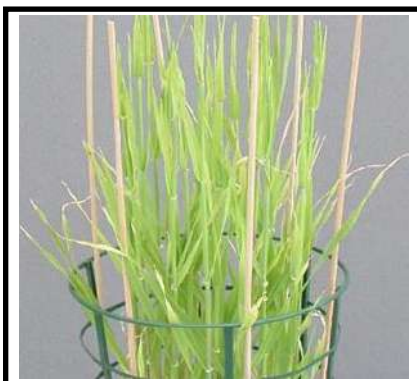
Corn



Lettuce



Citrus



Wheat



Tomato



Usage recommendations :-

- It is not recommended to use it on Apricot and apple crops
- It is not used on some varieties of pears
- Some damage was observed on cucumber crops, squash , lemon, walnuts and spinach
- Spray is used to treat a deficiency of the sulfur element .

Doses and usage :-

Crop	Pests	Dose / 100 L	PHI
Tomatoes-cantaloupe- Squash	Powdery mildew	100 - 150 g	5
Grapes-peaches	Powdery mildew - spider mites	100 - 150 g	14
Citrus	Powdery mildew - scabies	175 g	14
Apple-pear	Powdery mildew- spotting-scabies	150 - 300 g	14
Beans-peas	Rusts	175 g	5
Pepper	Leaf curl	200 g	5
Palms	Spider mites	200 g	7
Wheat-barley	Powdery mildew and spotting	175 g	14

Packing :-

Cosavet is available in 1 Kg