

# CERA TRAP

Liquid Protein

Control Fruit Fly



## Active ingredient :-

Liquid protein consisting of organic acids and amino acids extracted by hydrolysis

## Description :-

It is a natural biological attractant in the form of a liquid, free of pesticides, to control fruit flies. It is used in traditional and organic farms. It is placed in the form of a solution in plastic polyethylene traps that are hanged to the inside of the tree.



### How Cera-Trap work :-

Once the traps are suspended in trees, the active substance begins to volatilize to attract the fruit fly insect inside the traps through the openings on the packages, and the insect cannot escape from the traps again through the holes. After that, the insect floats on the surface of the liquid for up to about a day, and then sinks into the liquid. The traps attract females, especially those who are young and immature, more than males, at a rate of two thirds of the number for females and one third of the number for males.

Also, Cera-Trap is highly facultative in attracting the fruit fly insect without the vital enemies, due to the diameter of the openings that allow the entry of the fruit fly only and do not allow the entry of the larger beneficial insects.

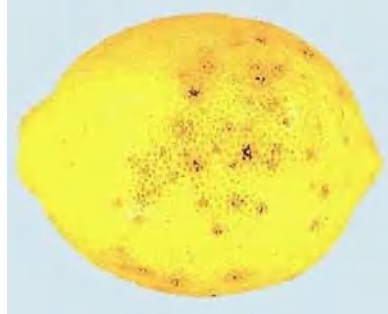
### Target crops:

Citrus	Orange - Lemon - Clementine - Tangerine - Grapefruit
Fruit trees	Peaches - apricots - nectarine - cherry - palm trees - apples - grapes
Tropical trees	Mango - avocado - guava - papaya

### Usage recommendations :-

- 1) Traps are hanged inside the tree at a distance of 1.5-2 meters from the surface of the soil .
- 2) The traps are hung in the northern side in general or in the southern places in particular, depending on which of the two sides is better in temperature. The important thing is to hang them in shady places with moderate temperatures from the tree, away from the sun, to ensure attracting the largest number of fruit flies.
- 3) It is ensured that the liquid remains inside the trap, and in the event that the liquid dries up, the trap is refilled again.
- 4) The trap does not need to add any pesticides to it, but the insect population is constantly monitored, as it may need to intervene with chemical control once or twice, depending on the severity of the infection.
- 5) The trap is installed about 45 days before harvest (generally when the fruit is 1/3 of its final size).
- 6) If the traps are installed late, the spread of the insect is monitored, as we resort to chemical control first to reduce the insect population, then the trap is installed while monitoring the population.
- 7) The number of traps on the outskirts of the farm should be increased if other neighboring farms do not control the insect well .

## Examples of infected crops



**Fruit fly in citrus**



**Fruit fly in pomegranate**

**Fruit fly in mango**



**Fruit fly in apple**

**Fruit fly in fig fruits**

**Fruit fly in papaya**



### Benefits of using Cera-Trap :-

- Biological material that does not need to add any chemical pesticides to the traps.
- There are no residues inside the fruits.
- High facultative as it fights fruit flies and does not affect the vital enemies.
- easy to use .
- Proper use of Ceratrap leads to good control of the pest in the field and the non-appearance of infection symptoms inside the store.

### Doses and usage :-

Crop	Infection	Doses	Application
Orange - lemon - clementine - mango - guava - avocado - papaya - grapes - peach - apricot - nectarine - apple	Fruit fly	70 - 100 Trap / ha	600ml of solution is added to one trap, enough to cover an area of 100 square meters

### Packing :-

Cera-Trap is available in 5 L gallon .