

Nouryon

الياسين الزراعية
ALYASEEN AGRI

Holland

Dissolvine Zinc

Zn 15%

Fast and immediate treatment
For Zinc deficiency



Introduction :-

Dissolvine Zinc 15 is a stable and easily soluble formula in water. It contains zinc in the form of chelated EDTA, which makes it easily absorbed by the roots and leaves of the plant. It also accepts mixing with most types of fertilizers, as it is included in various fertilization programs. There is zinc in the form of Disodium-Zn.

Dissolvine Zinc 15 is used to prevent and treat zinc deficiency in vegetables, field crops, fruit trees, and ornamental plants and is suitable for hydroponic farms.

The zinc element is chelated with a technique which makes it resist sedimentation and washing.

Dissolvine Zinc can be used by spraying on shoots or through the soil with different fertilization programs. It is preferable to spray on the leaves in case of need a quick treatment of zinc deficiency, as it is easily absorbed even in alkaline soil.

Symptoms of zinc deficiency in different crops



Lettuce



Citrus



Tomato



Cucumber



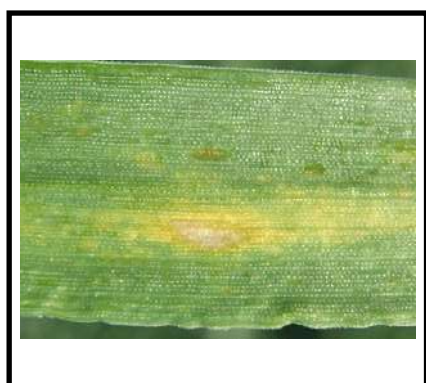
Potato



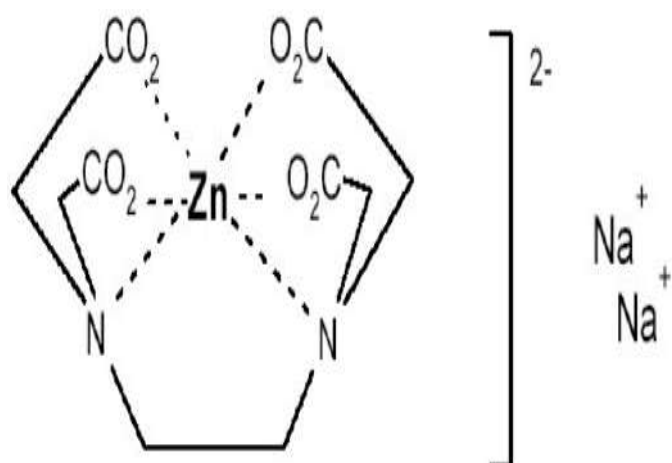
Grapes



Pepper



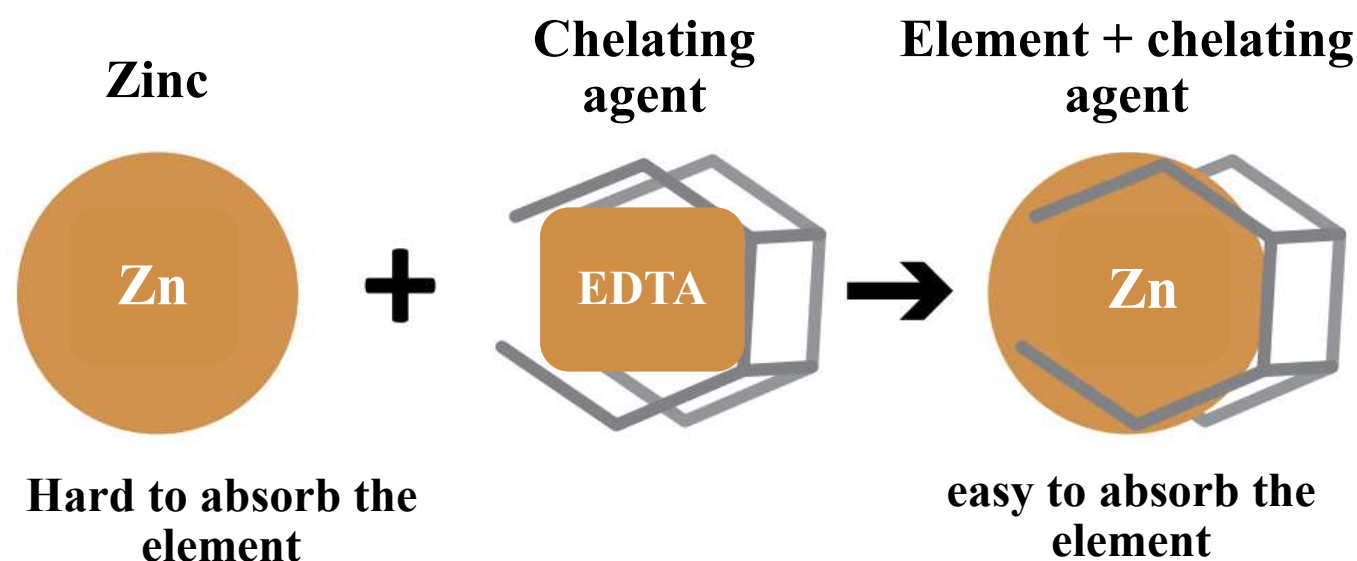
Wheat



Name and chemical form:

Ethylenediaminetetraacetic acid zinc-disodium complex; **EDTA-ZnNa₂**

Importance of chelating agent EDTA :-



Composition :-

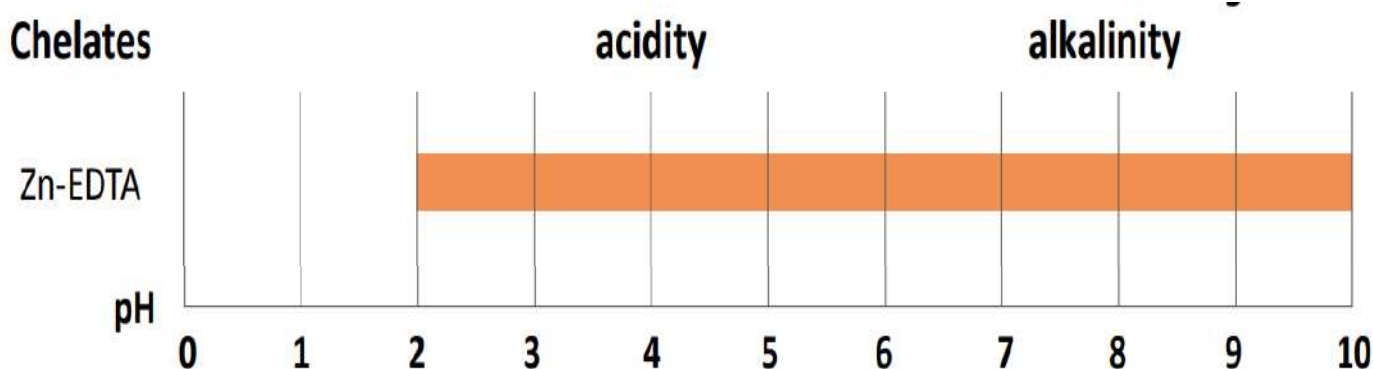
Zn	Chelated Zinc EDTA	PH	Solubility in water	Color
%14.8	%14.8	7 - 6	1.2 Kg / L	White

Usage Recommendations :-

- 1) Dissolvine Zinc can be used by spraying on shoots or through the soil. It is preferable to spray on the leaves in case a quick treatment is desired for zinc deficiency, or if its use through the soil is costly or difficult due to soil problems.
- 2) Preventive spraying is done at the beginning of the agricultural season when the leaves begin to form.
- 3) As for the therapeutic spraying, it is done in the first stages of the signs of deficiency of the element on the leaves, and the use of Dissolvine Zinc is repeated according to the need and according to what is clear in the usage schedule.
- 4) To avoid burning effects on leaves and fruits, avoid spraying during periods of high temperature
- 5) Avoid spraying during flowering period.
- 6) To improve coverage on papers, it is preferable to add a spreader and adhesive.
- 7) It is preferable to add it before or at the beginning of spring growth, and it can be used when cases of element deficiency appear.
- 8) It has no harmful effect if used according to recommendations and recommended doses.
- 9) It accepts mixing with most agricultural chemicals. In case of uncertainty, it is used separately.
- 10) It is important not to mix Dissolvine Zinc with nitric or concentrated sulfuric acid.
- 11) When mixing Dissolvine Zinc with other chemicals, it is noticed that there is no delay in spraying the mixture for long periods and that the spraying process is accelerated

PH Range for Mn :-

Dissolvine Zinc has a wide range of alkalinity and acidity, which makes it suitable for all types of agricultural soils



Usage and doses:

Crop	Dose	Time Of Application
Wheat - Rice	0.5 - 1 Kg / 1000 L	In the branching stage and repeated before expelling the spikes
Corn		10days before flowering and repeat when filling the grains
Tomato-Pepper-Eggplant-Cucumber-Watermelon-Melon-Squash-Strawberry		The first treatment is when an average vegetative group is formed, then the treatments are repeated 3 times, with a difference of 10 days between the treatment and the second
Potato		The first treatment is during vegetative growth, then at the beginning of tuber formation, then the treatment is repeated 3 times by a week difference
Carrots-sugar beets-potatoes		Spray in the vegetative growth stage, then repeat at the beginning of the roots swelling, then repeat after 15 days
Peach-apple-pear-apricot		The first treatment after the fruit-set complete then repeated 4 times with interval of one week
Citrus-guava-banana-mango		The first treatment is during the formation of vegetative growths, and it is repeated after the fruit-set 4 times
Grapes		First treatment after fruit-set complete then repeat every 10 days

Packing :-

Dissolvine Zinc available in 1 & 25 Kg