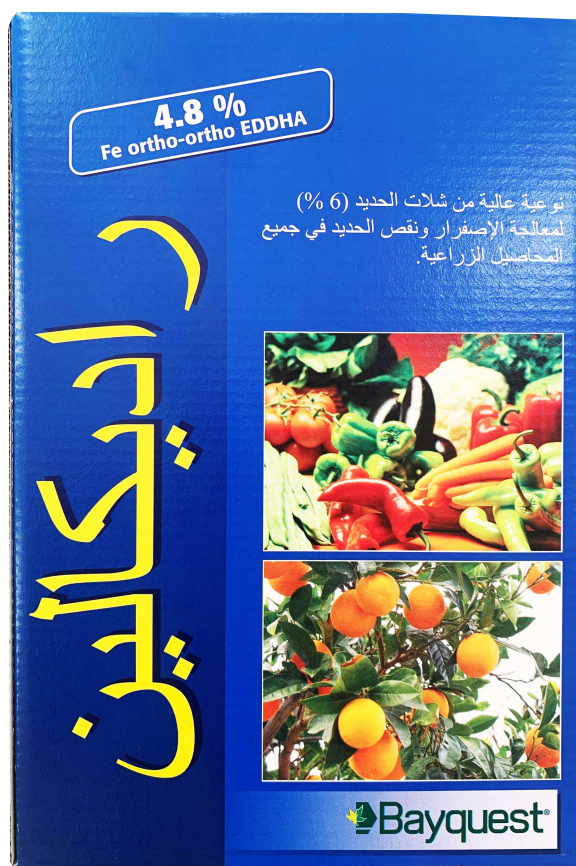


RADICALENE

Fe 6% EDDHA

High quality iron chelate to
treat iron deficiency quickly



Introduction :-

- Iron Radicalene 6% is a stable and easily soluble formulation in water and contains iron in the form of an EDDHA chelate in the ortho-ortho position of 4.8% and in the ortho-para position of 1.2%

Symptoms of iron deficiency in different crops



Lettuce



Strawberry



Citrus



Tomatoes



Cucumber



Potato



Grape



Pepper

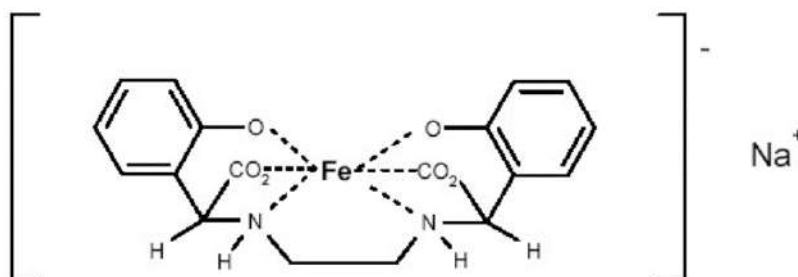


Wheat



Chemical name and formula :-

Ethylenediamine-N,N'-bis(2-hydroxy-phenyl acetic acid) ferric-sodium complex;
EDDHA-FeNa



Composition:-

| Color | Water solubility | PH | Ortho-Ortho Chelated Fe | Ortho-Para Chelated Fe | Fe |
|-------------|------------------|-------|-------------------------|------------------------|-----|
| Brown – Red | 60 g/l | 7 - 9 | % 4.8 | % 1.2 | % 6 |

Usage Recommendation :-

- Radicalene is used when symptoms of iron deficiency appear or periodically as a preventive treatment to avoid the appearance of symptoms.
- It can be mixed with traditional fertilizers to get better results.
- It is used on all crops through drip irrigation or flood irrigation, according to the percentages mentioned in the application dose table
- It accepts mixing with most common fertilizers.
- Do not mix with compounds containing copper or lead.

Dosage :-

| Crop | Dosage |
|---------------------|--------------------|
| Vegetables | 2 - 3 Kg / Hectare |
| Fruit tree , Citrus | 15 - 30 g / Tree |
| Grape | 2 - 3 Kg / Hectare |

Package :-

Radicalene Fe 6% available in 1 Kg