



UAE

# Purti Gala

28-14-14+TE

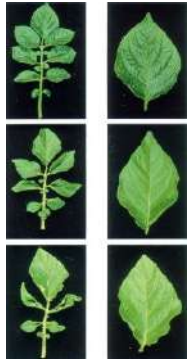
High Nitrogen Soluble Fertilizer



## Introduction :-

A highly soluble fertilizer in the proportion of Nitrogen 28% as ammonium, urea and nitrate, in addition to the elements Potassium, phosphorus. It is produced from the purest types of raw materials. It is a fine and homogeneous crystalline powder that is completely soluble in water and fast absorption. It is used in various fertilization programs with irrigation water and with Foliar spray

# Nitrogen Deficiency



**N-def-Potatoes**



**N-def-Lettuce**



**N-def-Strawberry**



**N-def-tomatoes**



**N-def-Wheat**



**N-def-Cucumber**



**N-def-Citrus**



**N-def-Grapes**



التركيب % :

Nitrogen Total	Nitrogen Nitrite	Nitrogen Urea	Nitrogen Ammonium	Phosphor Total	Phosphor MAP (Mono Ammonium Phosphate)	Potassium Total	Potassium Potassium Nitrate	PH
N	NO <sub>2</sub>	NH <sub>2</sub>	NH <sub>4</sub>	P <sub>2</sub> O <sub>5</sub>	NH <sub>4</sub> H <sub>2</sub> PO <sub>4</sub>	K <sub>2</sub> O	KNO <sub>3</sub>	PH
<b>28</b>	<b>3.9</b>	<b>21.4</b>	<b>2.7</b>	<b>14</b>	<b>14</b>	<b>14</b>	<b>14</b>	<b>5 - 6</b>

### How to use and Dosage :-

Crop	Dosage
Outdoor Cultivations	0.75 - 138 g / plant / day
Green Houses	1.5 - 3.2 Kg / 500 m <sup>2</sup> / Treatment
Foliar Spraying	2.1 - 3 Kg / Hectare / 1000 L
Fruit Trees	100 g / Tree / Week ( 1 - 5 Kg / Season )
Pivot Irrigation	5.5 - 7.5 Kg / Hectare / Treatment
Lawn Foliar Fertilization	2 - 2.5 Kg / Hectare / Treatment
The dosage depending on the soil analysis and the soil nutrition	

### Usage Recommendations:-

- Keep out of direct sunlight.
- Store in dry and cool conditions, and the storage does not exceed 5 compact bags.
- Avoid contact with hands and eyes.
- The bags must be tightly closed
- It is recommended to use masks and gloves when handling the product

### Packing:-

Purti Gala 28-14-14+TE is available in 25 kg bags